
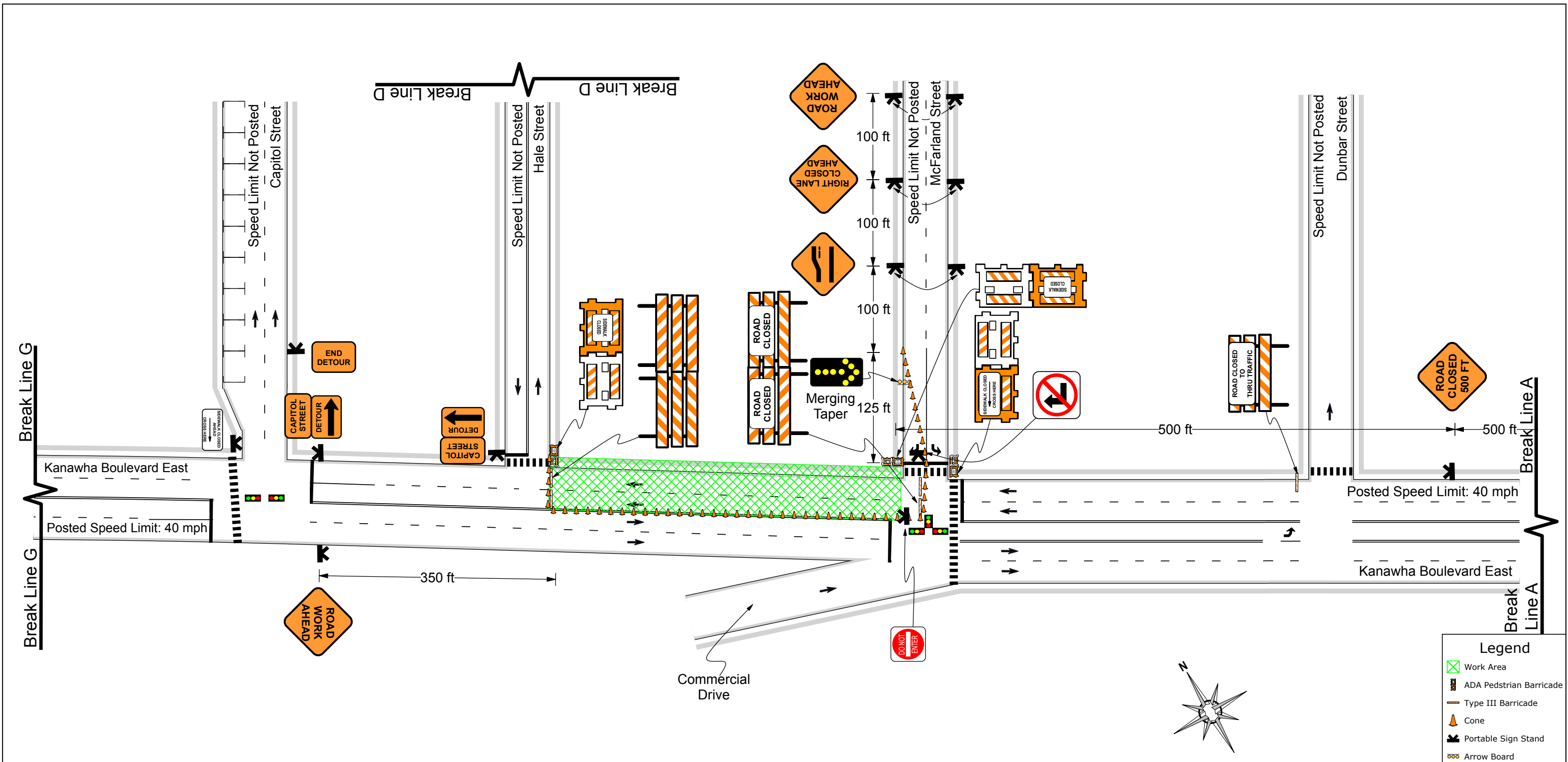
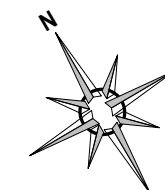


Legend
 Work Area

	<p>Date: 03/17/2017 Author: G. Allison Project: Kanawha Boulevard Detour - Charleston, WV Customer: AEP Job#: DAP-026-9050 Revised: 3/21/2017</p>
	<p>Comments: Type of Road: Urban Commercial Traffic Volume: Light to Moderate</p>
	<p>All signs & devices shall be placed in accordance with the latest provisions of the Manual for Uniform Traffic Control Devices (MUTCD) with respect to any applicable provisions from the City of Charleston, and the West Virginia Department of Transportation (WVDOT).</p>
<p>PLANS ARE NOT TO SCALE</p>	



Legend	
	Work Area
	ADA Pedestrian Barricade
	Type III Barricade
	Cone
	Portable Sign Stand
	Arrow Board



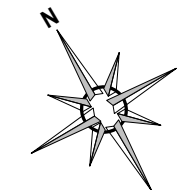
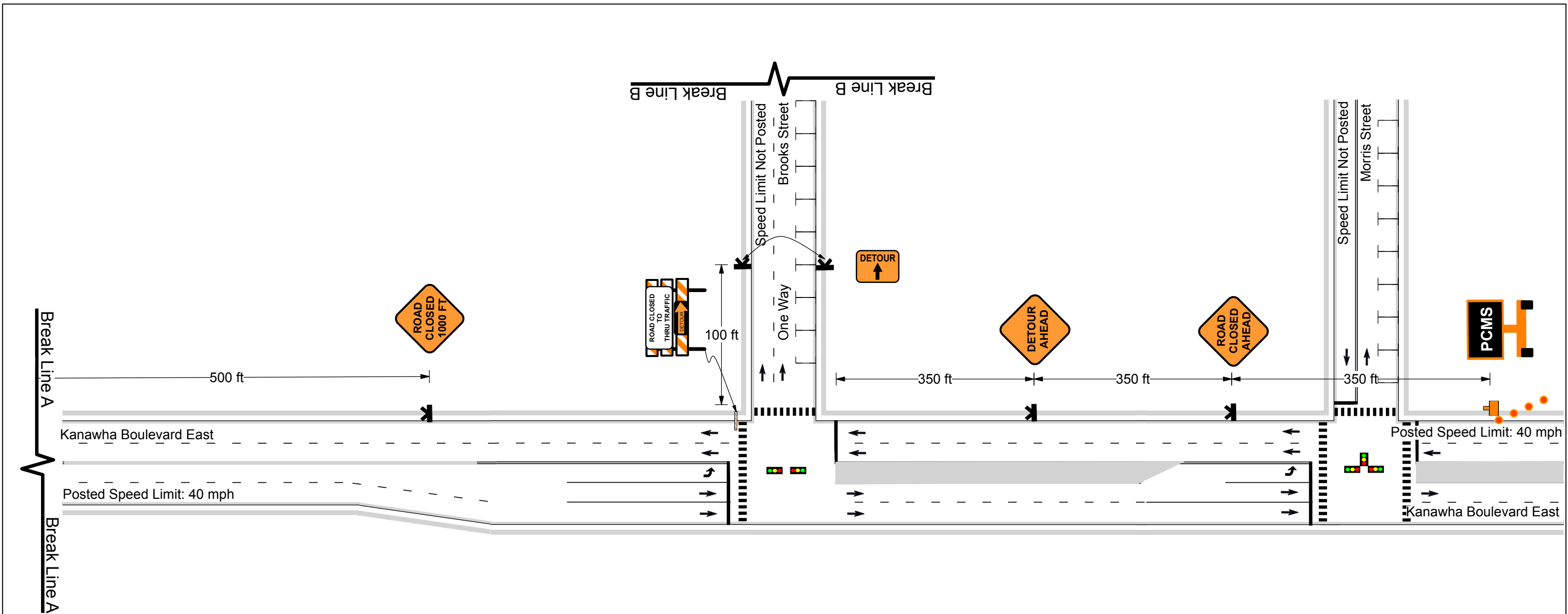
Date: 03/17/2017 **Author:** G. Allison **Project:** Kanawha Boulevard Detour - Charleston, WV
Customer: AEP **Job#:** DAP-026-9050 **Revised:** 3/21/2017

Comments:
 Type of Road: Urban Commercial
 Traffic Volume: Light to Moderate

All signs & devices shall be placed in accordance with the latest provisions of the Manual for Uniform Traffic Control Devices (MUTCD) with respect to any applicable provisions from the City of Charleston, and the West Virginia Department of Transportation (WVDOT).

AWP

Note:
 - Sign spacing may be adjusted to fit field conditions.
 - MOT to conform to WVDOH Manual on Temporary Traffic Control for Street & Highways Case B7



Legend	
	Type III Barricade
	Portable Sign Stand
	Drum
	PCMS



Message	
Panel 1	Panel 2
KANAWHA	FOLLOW
BLVD	POSTED
CLOSED	DETOUR

Note:
 - Sign spacing may be adjusted to fit field conditions.
 - MOT to conform to WVDOH Manual on Temporary Traffic Control for Street & Highways Case B7

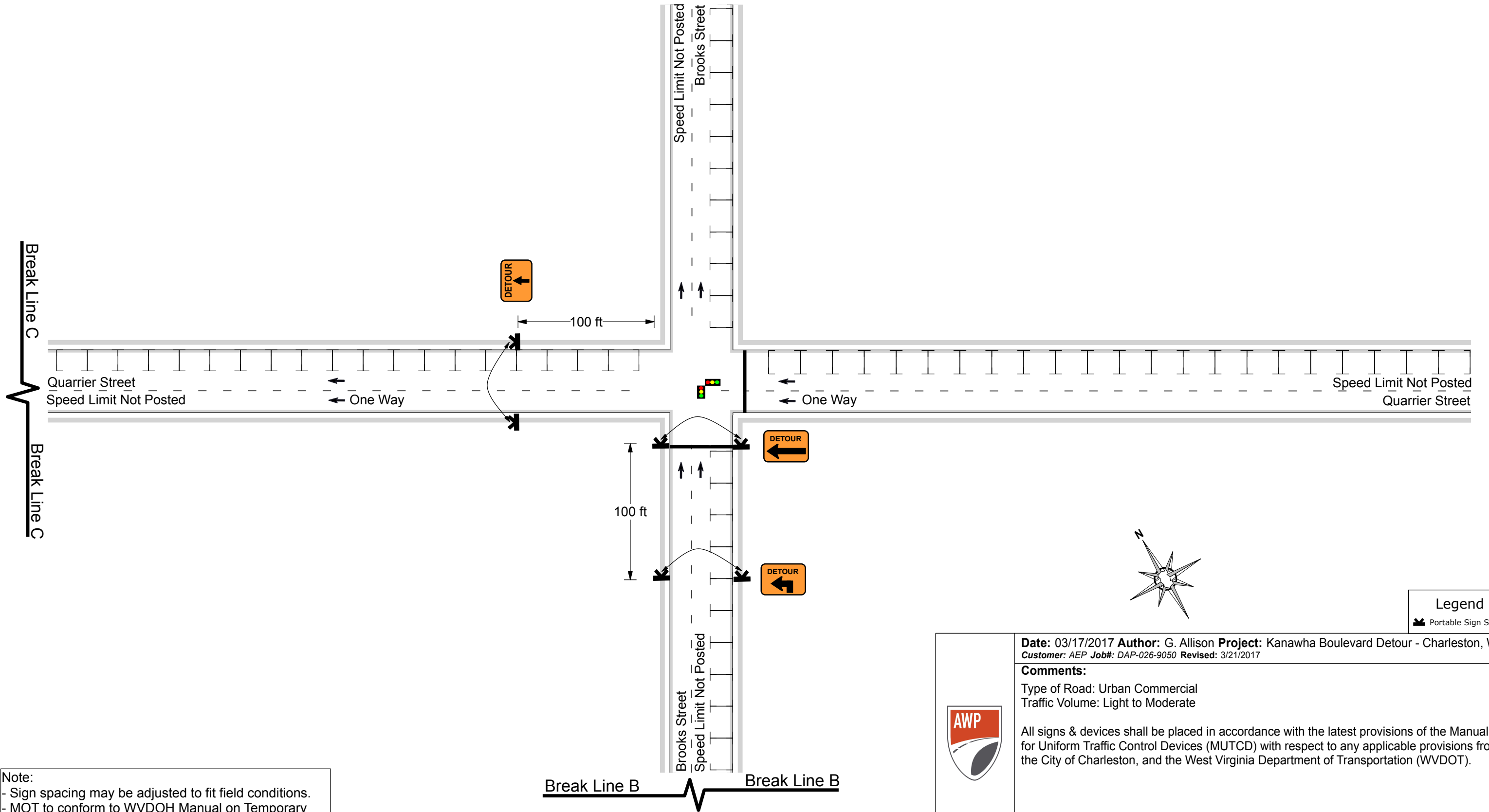


Date: 03/17/2017 **Author:** G. Allison **Project:** Kanawha Boulevard Detour - Charleston, WV
Customer: AEP **Job#:** DAP-026-9050 **Revised:** 3/21/2017

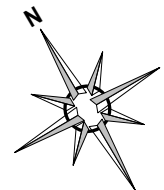
Comments:
 Type of Road: Urban Commercial
 Traffic Volume: Light to Moderate

All signs & devices shall be placed in accordance with the latest provisions of the Manual for Uniform Traffic Control Devices (MUTCD) with respect to any applicable provisions from the City of Charleston, and the West Virginia Department of Transportation (WVDOT).


PLANS ARE NOT TO SCALE

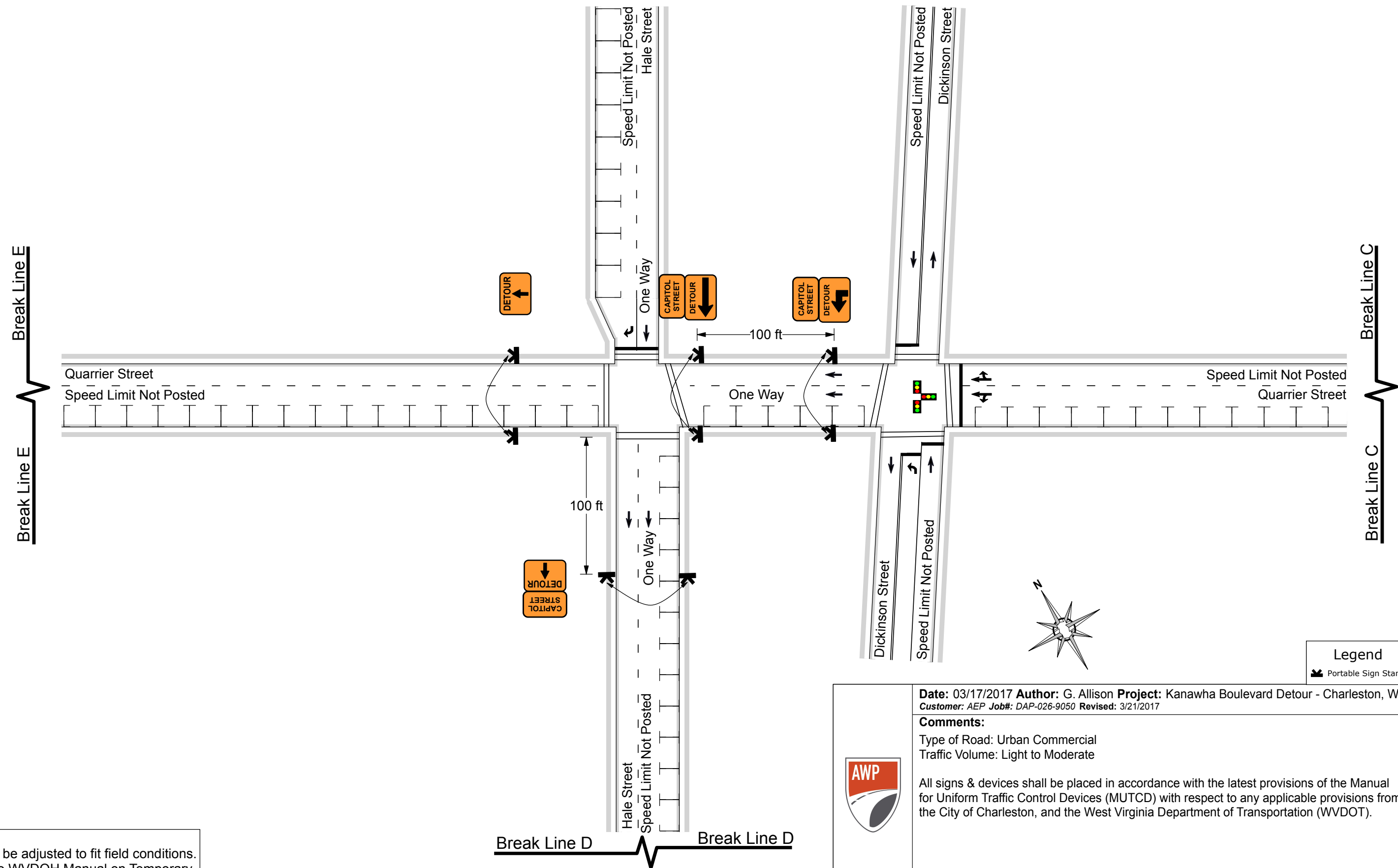


Note:
 - Sign spacing may be adjusted to fit field conditions.
 - MOT to conform to WVDOH Manual on Temporary Traffic Control for Street & Highways Case B7



Legend
 Portable Sign Stand

	<p>Date: 03/17/2017 Author: G. Allison Project: Kanawha Boulevard Detour - Charleston, WV Customer: AEP Job#: DAP-026-9050 Revised: 3/21/2017</p>
	<p>Comments: Type of Road: Urban Commercial Traffic Volume: Light to Moderate</p> <p>All signs & devices shall be placed in accordance with the latest provisions of the Manual for Uniform Traffic Control Devices (MUTCD) with respect to any applicable provisions from the City of Charleston, and the West Virginia Department of Transportation (WVDOT).</p>
<p>PLANS ARE NOT TO SCALE</p>	
<p>Sheet 4 of 7</p>	



Note:
 - Sign spacing may be adjusted to fit field conditions.
 - MOT to conform to WVDOH Manual on Temporary Traffic Control for Street & Highways Case B7

Legend
 Portable Sign Stand

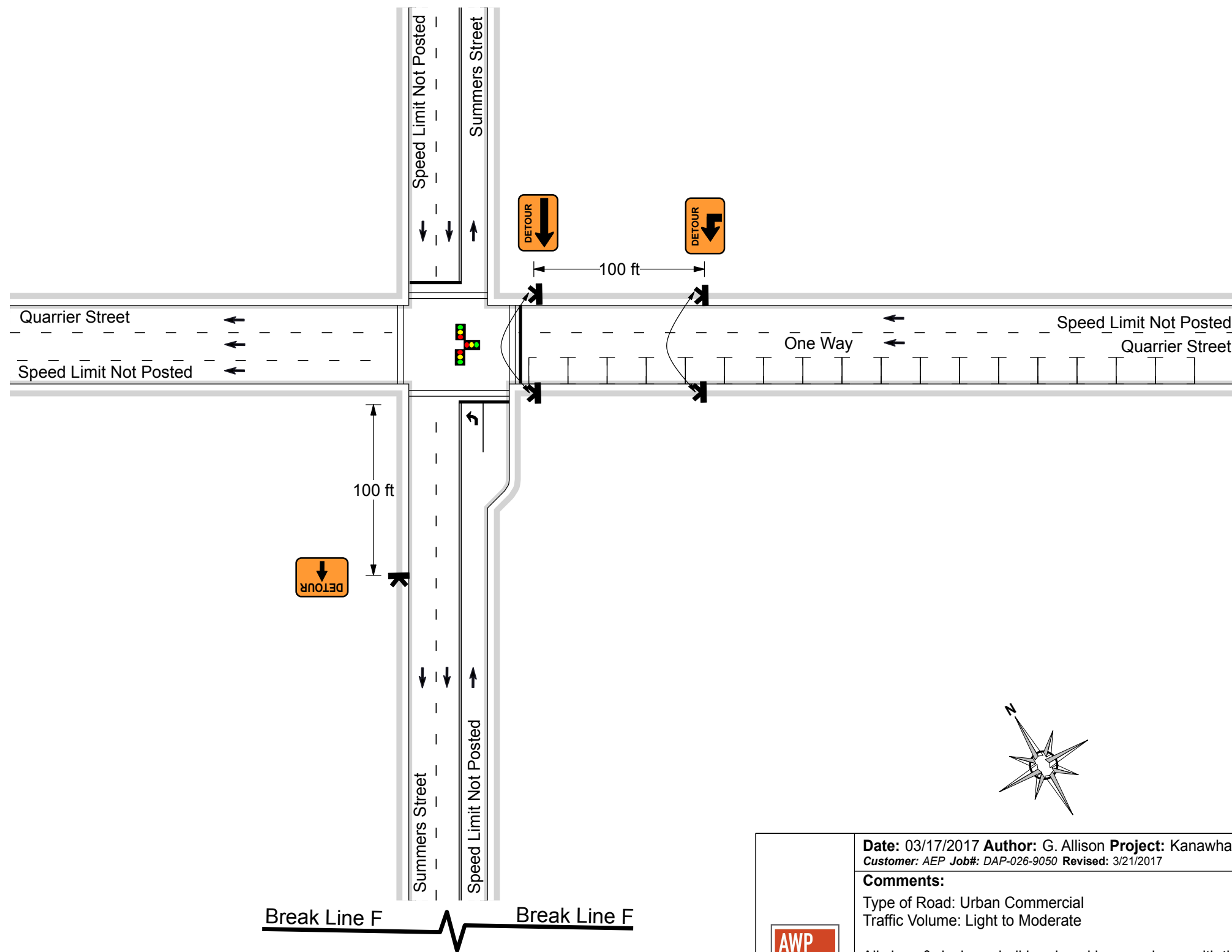
Date: 03/17/2017 **Author:** G. Allison **Project:** Kanawha Boulevard Detour - Charleston, WV
Customer: AEP **Job#:** DAP-026-9050 **Revised:** 3/21/2017

Comments:
 Type of Road: Urban Commercial
 Traffic Volume: Light to Moderate

All signs & devices shall be placed in accordance with the latest provisions of the Manual for Uniform Traffic Control Devices (MUTCD) with respect to any applicable provisions from the City of Charleston, and the West Virginia Department of Transportation (WVDOT).

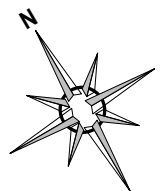
AWP

PLANS ARE NOT TO SCALE



Break Line E

Break Line F



Legend
 Portable Sign Stand

Date: 03/17/2017 **Author:** G. Allison **Project:** Kanawha Boulevard Detour - Charleston, WV
Customer: AEP **Job#:** DAP-026-9050 **Revised:** 3/21/2017

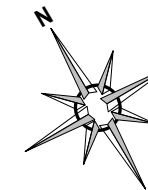
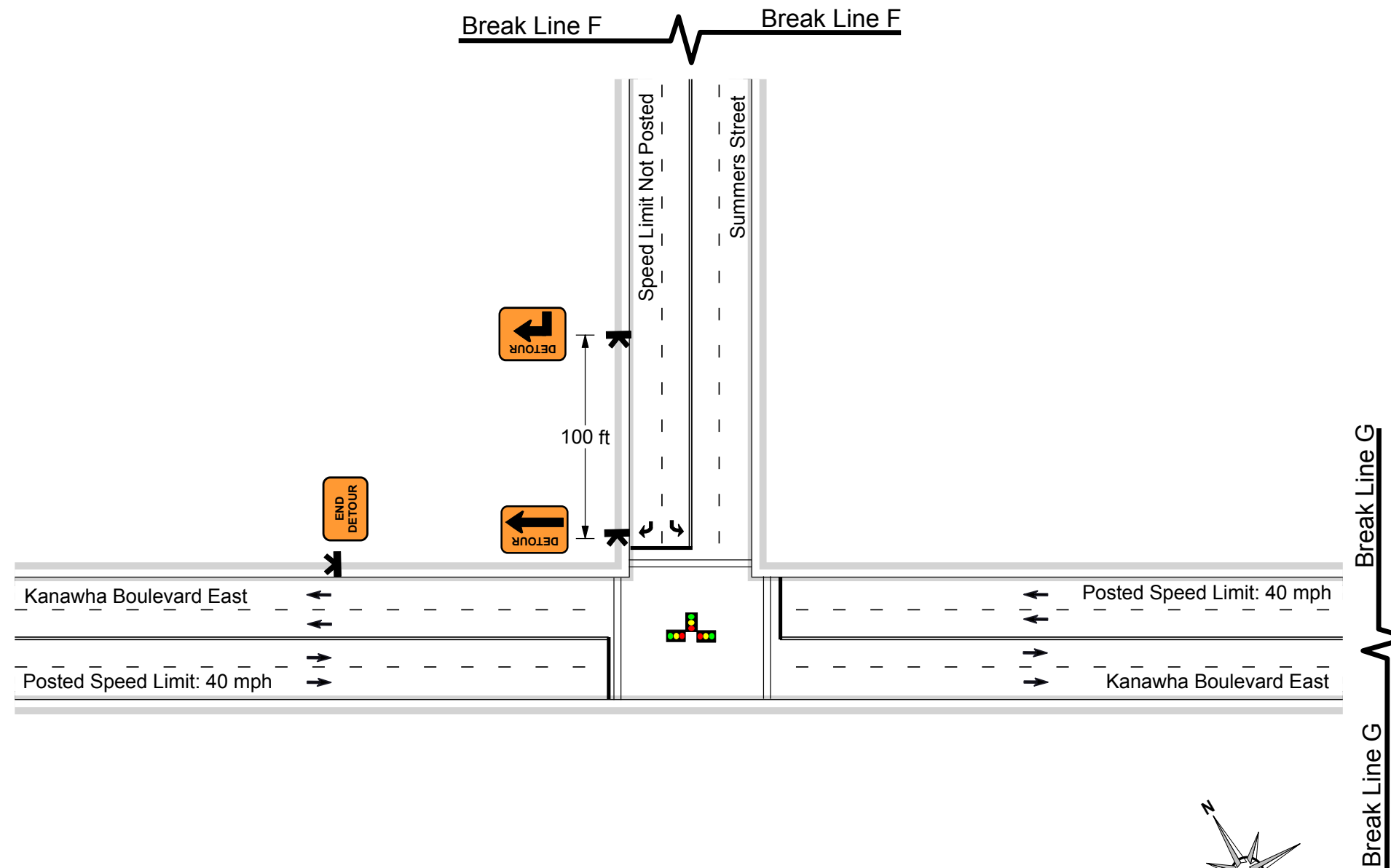
Comments:
 Type of Road: Urban Commercial
 Traffic Volume: Light to Moderate

All signs & devices shall be placed in accordance with the latest provisions of the Manual for Uniform Traffic Control Devices (MUTCD) with respect to any applicable provisions from the City of Charleston, and the West Virginia Department of Transportation (WVDOT).

AWP

PLANS ARE NOT TO SCALE

Note:
 - Sign spacing may be adjusted to fit field conditions.
 - MOT to conform to WVDOH Manual on Temporary Traffic Control for Street & Highways Case B7




Legend

 Portable Sign Stand

Date: 03/17/2017 **Author:** G. Allison **Project:** Kanawha Boulevard Detour - Charleston, WV
Customer: AEP **Job#:** DAP-026-9050 **Revised:** 3/21/2017

Comments:
 Type of Road: Urban Commercial
 Traffic Volume: Light to Moderate

All signs & devices shall be placed in accordance with the latest provisions of the Manual for Uniform Traffic Control Devices (MUTCD) with respect to any applicable provisions from the City of Charleston, and the West Virginia Department of Transportation (WVDOT).



PLANS ARE NOT TO SCALE

Note:
 - Sign spacing may be adjusted to fit field conditions.
 - MOT to conform to WVDOH Manual on Temporary Traffic Control for Street & Highways Case B7